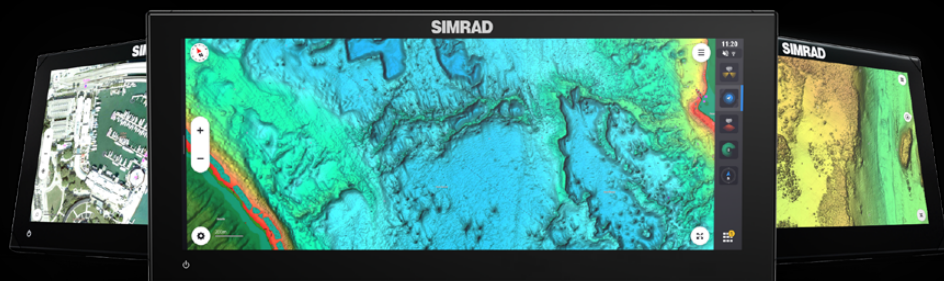


SIMRAD®

NSX®

Basic Operation Guide

English



www.simrad-yachting.com

Copyright

© 2024 Navico Group. All Rights Reserved. Navico Group is a division of Brunswick Corporation.

Trademarks

® Reg. U.S. Pat. & Tm. Off. and ™ common law marks. Visit www.navico.com/intellectual-property to review the global trademark rights and accreditations for Navico Group and other entities.

- Navico® is a trademark of Navico Group.
- Simrad® is a trademark of Kongsberg Maritime AS, licensed to Navico Group.
- NSX® is a trademark of Navico Group.
- C-MAP® is a trademark of Navico Group.
- C-MAP DISCOVER X® is a trademark of Navico Group.
- C-MAP REVEAL X® is a trademark of Navico Group.
- CZone® is a trademark of POWER PRODUCTS, LLC.
- Mercury Marine® is a trademark of Brunswick Corporation.
- NMEA® and NMEA 2000® are trademarks of the National Marine Electronics Association.
- SmartCraft® is a trademark of Brunswick Corporation.
- App Store® and App Store logos are trademarks of Apple Inc.
- Google Play® and Google Play logos are trademarks of Google LLC.
- QR code® is a trademark of Denso Wave Incorporated.
- Bluetooth® is a trademark of Bluetooth SIG, Inc.
- Wi-Fi® is a trademark of Wi-Fi Alliance.
- SD® and microSD® are trademarks of SD-3C, LLC.

Warranty

This product's warranty is supplied as a separate document.

Safety, disclaimer and compliance

This product's safety, disclaimer and compliance statements are supplied as a separate document.

Internet usage

Some features in this product use an internet connection to perform data downloads and uploads. Internet usage via a connected mobile/cell phone internet connection or a pay-per-MB type internet connection may require large data usage. Your service provider may charge you based on the amount of data you transfer. If you are unsure, contact your service provider to confirm rates and restrictions. Contact your service provider for information about charges and data download restrictions.

More information

Document version: 002

This document was prepared using software version 1.9.X

Features described and illustrated in this guide may vary from your unit due to continuous development of the software.

For the latest version of this document in supported languages, and other related documentation, visit:

www.simrad-yachting.com/downloads/nsx.

Contact us

For product support and service information, visit www.simrad-yachting.com/contact-us.

CONTENTS

- 4 About**
- 4 Turn unit on/off**
 - 4 External power control
- 5 First startup**
- 6 Quick access menu**
 - 6 Access by swiping
 - 6 Access by power button
 - 7 Connect to mobile app
 - 8 Standby
 - 8 Screen lock
 - 8 Screenshot
 - 8 Report issues
 - 9 Night mode
 - 9 Brightness
 - 9 Sync
- 10 Home screen**
 - 11 Edit home screen
 - 12 Hide apps
- 13 Recent apps panel**
 - 14 Emergency and MOB
- 15 Apps**
 - 15 Open apps
 - 15 Close apps
 - 16 Pin apps
 - 16 Unpin apps
 - 17 Custom app groups
- 18 SiriusXM® weather and Fish Mapping®**
- 18 Discover X and Reveal X Charts**
- 19 Controllers**
 - 19 Show control bar
 - 20 Open controller
 - 20 Float a controller
 - 21 CZone® Digital switching controller
 - 21 Mercury Engines controller
- 22 Network sonar sharing**
- 23 Alerts**
 - 23 View alert messages
 - 24 Manage alert rules
- 25 Status icons**
- 26 USB port**
- 26 Card reader**
- 27 Connected devices**
 - 27 Configure connected devices
 - 27 Simulation
- 28 System software**
 - 28 Update software
 - 28 Backup data
- 29 System settings**
 - 31 Restore factory settings

ABOUT

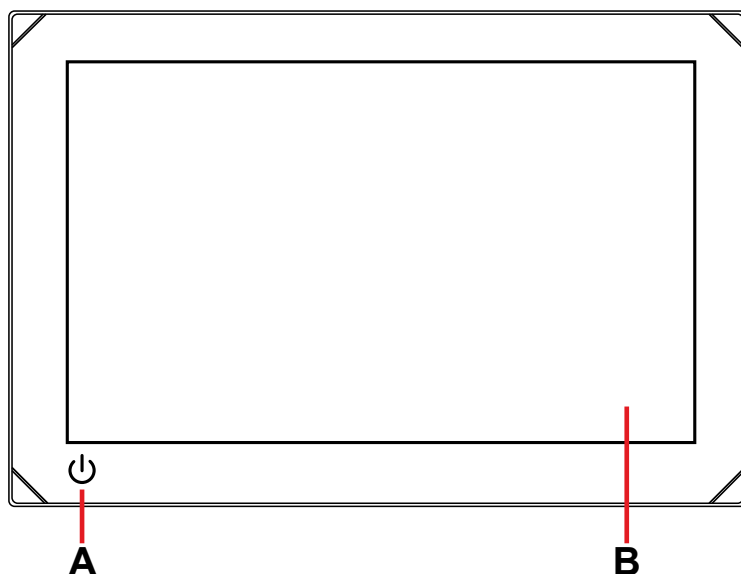
Simrad® NSX multi-function display is available in various sizes. This document describes the basic operation of a NSX multi-function display (MFD) unit.

For the latest version of this document and other app guides, we recommend you download the Simrad® mobile app or visit www.simrad-yachting.com/nsx.

TURN UNIT ON/OFF

To turn the unit on, press and hold the power button. A beep indicates it is powering up.

To turn the unit off, press and hold the power button, or select **Power off** from the quick access menu.



- A Power button
- B Touchscreen

External power control

Power to the unit can be controlled by an external switch or other units. For details about available power options, refer to the unit's installation manual.

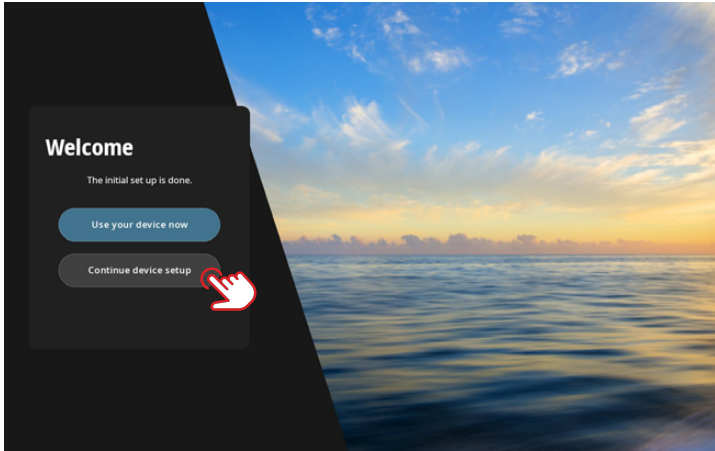
→ **Note:** If your MFD is controlled by an external power source, it cannot be powered off using the power button. Press and hold the power button to put the unit in standby mode. To wake the unit, press the power button again.

FIRST STARTUP

When you start the unit for the first time, or when you start it after a factory reset, you need to complete the initial setup for language, country, timezone and scan for an existing boat network.

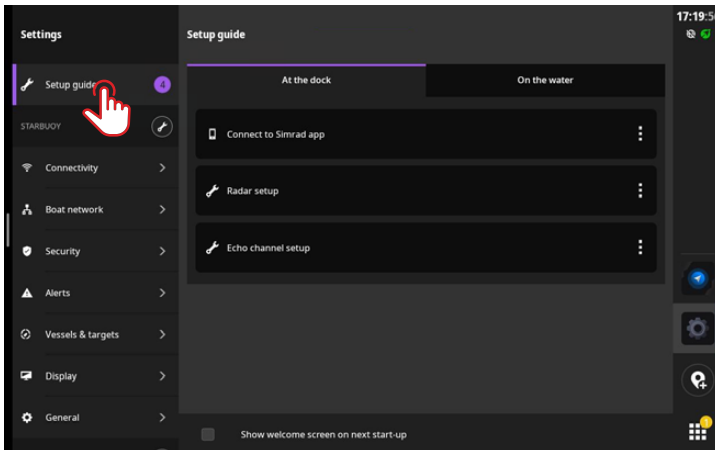
After that, the **Welcome** screen presents you with two choices:

- Select **Use your device now** to start using the device immediately.
→ *Note: If you select this option, you will continue to receive alert notifications to complete the device setup.*
- Select **Continue device setup** (recommended) to complete the device setup.



From the **At the dock** tab, complete the details as per the on-screen prompts.

→ *Note: The **On the water** tab remains disabled if there are no outstanding configuration tasks.*



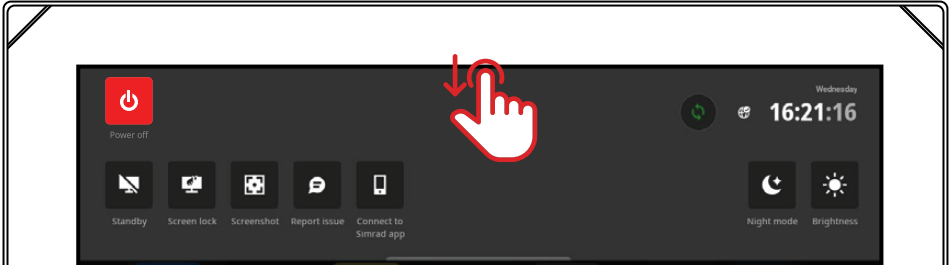
→ *Note: All settings configured during the first startup can be changed later.*

QUICK ACCESS MENU

The quick access menu gives you quick access to basic system settings and features.

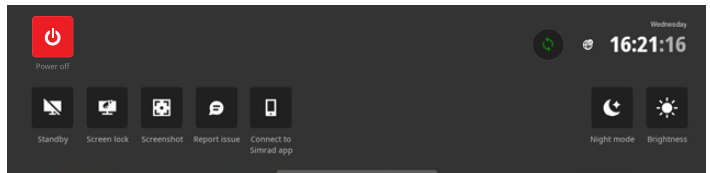
Access by swiping

You can display the quick access menu by swiping down from the top of the screen.



Access by power button

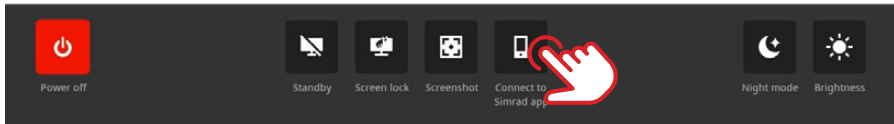
Alternatively, you can display the quick access menu by pressing the power button.



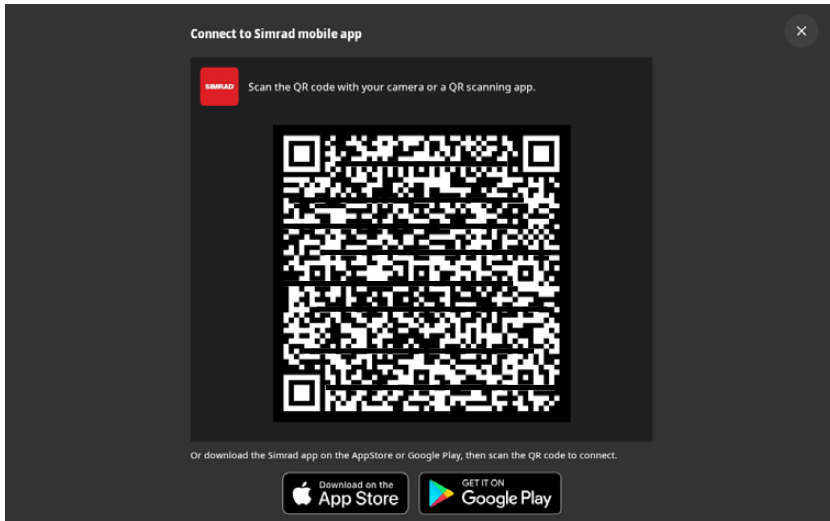
→ *Note: To hide the quick access menu, swipe up or tap anywhere on the screen.*

Connect to mobile app

Select **Connect to Simrad app** from the quick access menu to connect your mobile device (phone or tablet) to the unit.



Download the Simrad® mobile app from the App Store® or Google Play®, then use the app to scan the QR code® as part of the steps to add a device to the app.



Once connected, you can use the mobile app to:

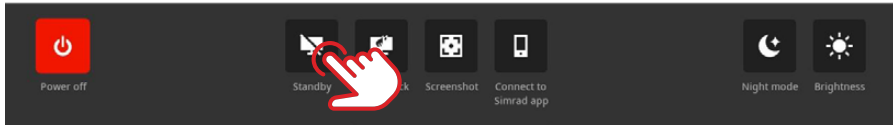
- Download and view app guides
- Register your display unit
- Subscribe to Premium charts
- Create your own waypoints, routes and tracks
- Explore points of interest (POI)
- Monitor marine traffic and weather
- Download and apply unit software updates
- **Note:** An internet connection is required to synchronize your data with cloud services from the display unit or mobile device.

Standby

Standby mode helps conserve power when the unit is not in use without completely turning it off. When in standby, the screen turns off while the system and connected devices continue to run.

Select **Standby** from the quick access menu to enter standby.

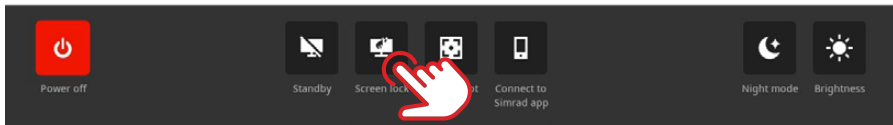
Press the power button to exit standby mode.



→ *Note: The on-screen power button is not available when the unit is controlled by an external switch or other units.*

Screen lock

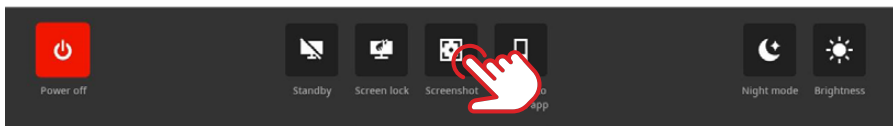
Select **Screen lock** from the quick access menu to lock the touchscreen and prevent accidental operation. Press the power button to unlock the touchscreen.



→ *Note: The touchscreen automatically unlocks to display alarms or warning alerts even if the touchscreen was previously locked.*

Screenshot

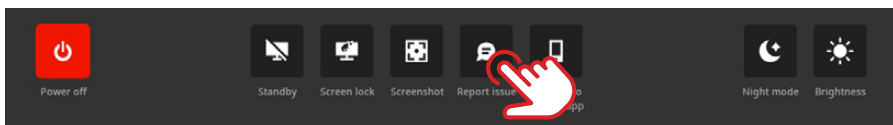
Select **Screenshot** from the quick access menu to capture an image of your screen. Images are stored on a microSD® card or USB storage device inserted into the unit.



→ *Note: If a microSD® card and USB storage device are both inserted, images are saved to the USB storage device.*

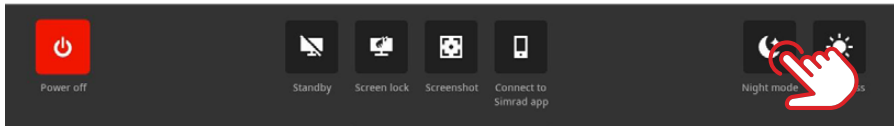
Report issues

To report software issues, select **Report issue** from the quick access menu. Follow the on-screen prompts to add a name and description to the report, it will be saved onto the microSD® card. If you need further assistance, contact Simrad® Technical Support.



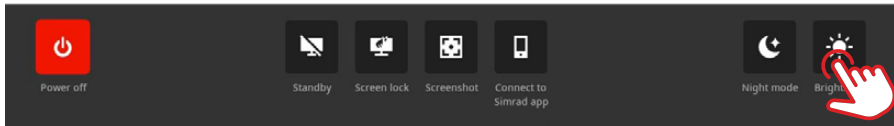
Night mode

Night mode optimizes the color palette and backlight for low light conditions. Select **Night mode** from the quick access menu to turn night mode on or off.



Brightness

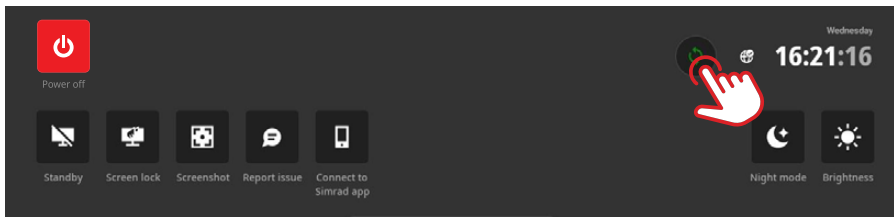
To switch between the display's pre-defined brightness levels, press the power button repeatedly. Alternatively, select **Brightness** from the quick access menu and slide the bar to the desired level.



→ **Note:** If you dim the brightness so the screen appears black when in brighter environments, the unit may appear to be turned off.


Sync

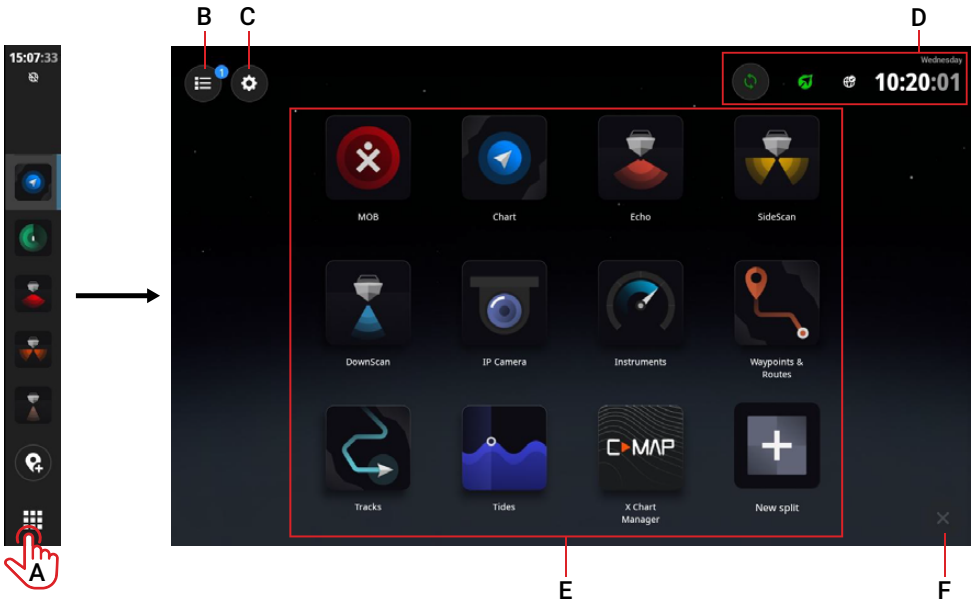
Select to synchronize data between your display and the cloud service. Use it to synchronize information like routes, waypoints, tracks etc., created on the mobile app.



→ **Note:** An internet connection is required to synchronize your data with cloud services from the display unit or mobile device.

HOME SCREEN

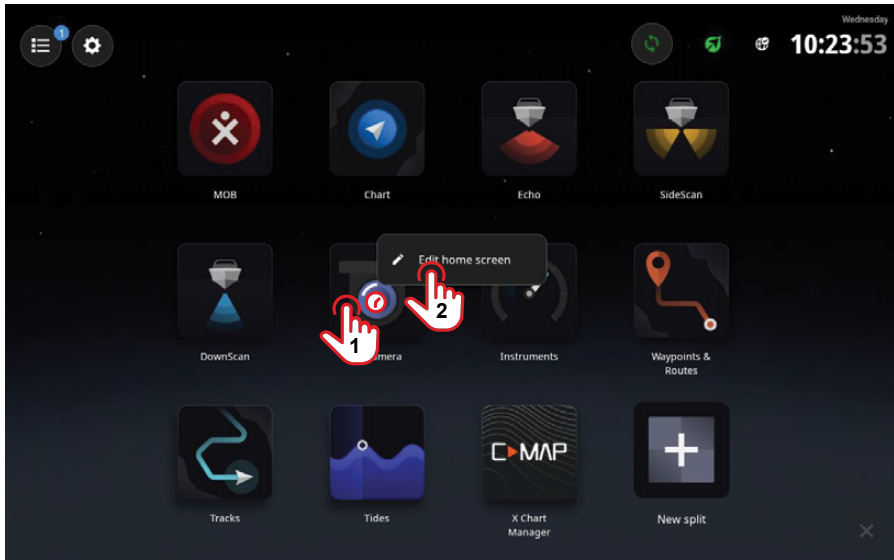
To open your home screen, select the home button  on the recent apps panel. All apps, settings and alert messages can be accessed from the home screen.



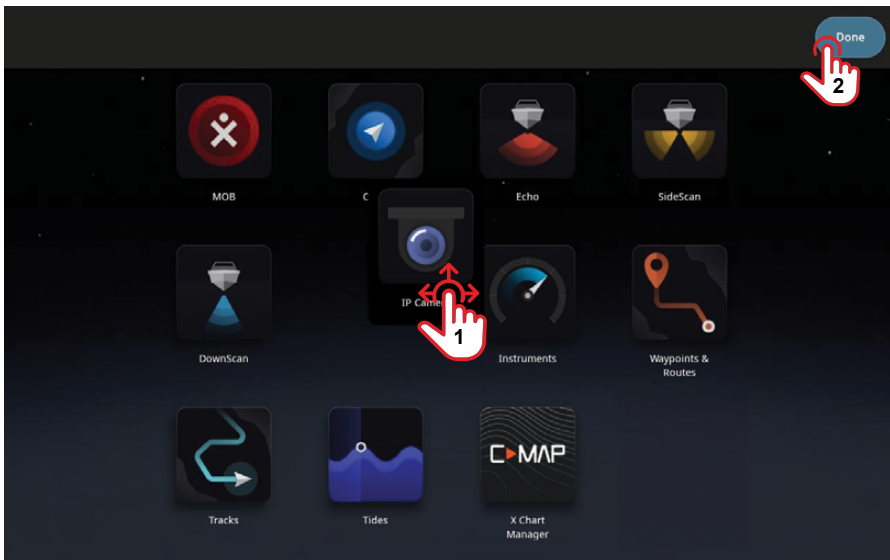
- A Home button — select to view the home screen
 - B Alerts list — select to view recent and historic system alerts
 - C Settings — select to view MFD settings
 - D Status bar — displays the current status for cloud sync, navigation, internet connection, day and time.
 - E Apps — displays a grid layout of all the system and custom app groups
 - F Exit — select to exit the home screen and return to last app
- **Note:** The exit button (F) is disabled if there are no active apps.

Edit home screen

To change the order of your home screen apps, select and hold an app (1) to view the **Edit home screen** button (2), then select it.



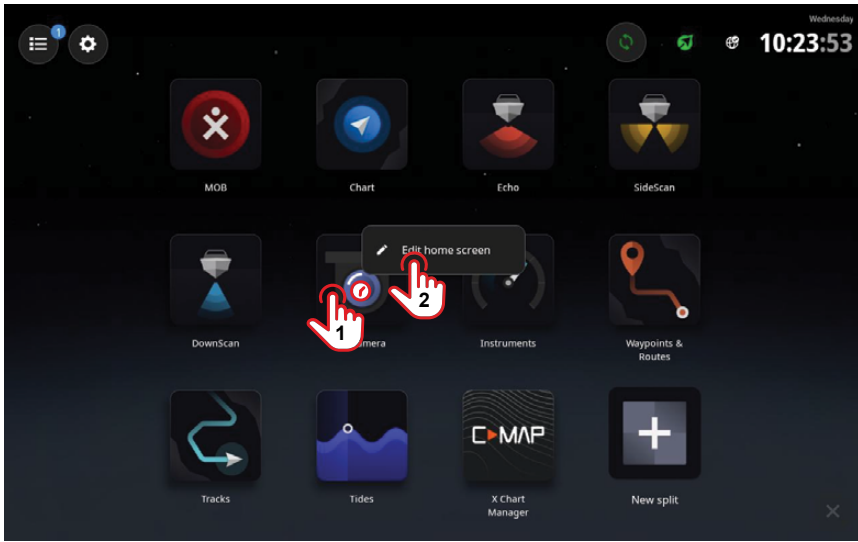
All the app icons will appear with a white outline. Select and drag the app icon (1) to your desired position on the screen grid, then select **Done** (2).



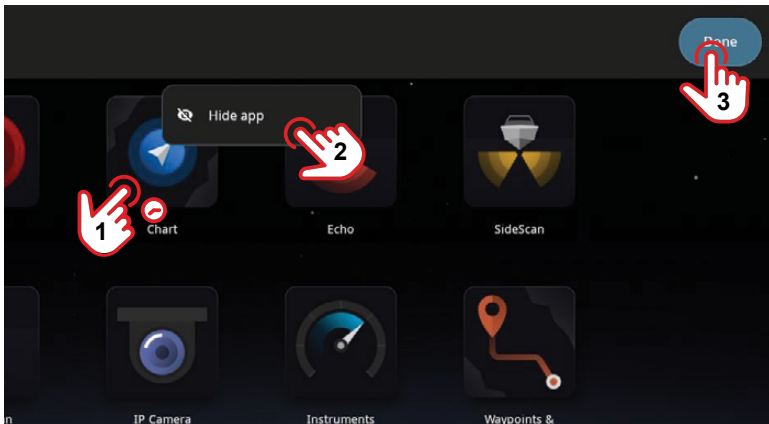
Hide apps

You can selectively hide apps from the home screen if you do not have the necessary hardware installed on your vessel.

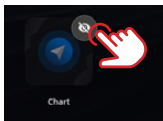
To hide an app, first select and hold any app (1), then select **Edit home screen** (2).



All the app icons will appear with a white outline. Select and hold the app icon (1) you want to hide, then select **Hide app** (2). Select **Done** (3) when you're finished.

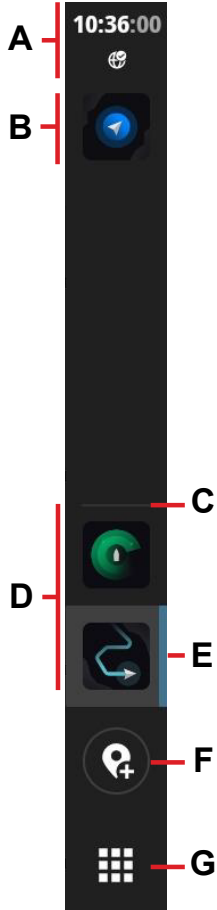


Repeat the steps above, then select  to unhide an app.



RECENT APPS PANEL

When an app is running or pinned, its icon displays on the recent apps panel.



- A Status information — Displays the time and status icons
- B Pinned apps display at the top of the panel
- C Divider — A horizontal line separates pinned and unpinned apps
- D Unpinned apps display at the bottom of the panel
- E Active app — A vertical line appears next to the app currently showing on the main display
- F Waypoint button — Creates a waypoint at the vessel's current location and displays a confirmation. Waypoints created this way are visible in the Chart app and Waypoints & Routes app.
- G Home button — When selected, the home screen displays and the button changes to the close/back button. A badge indicates the number of alert messages that need attention.

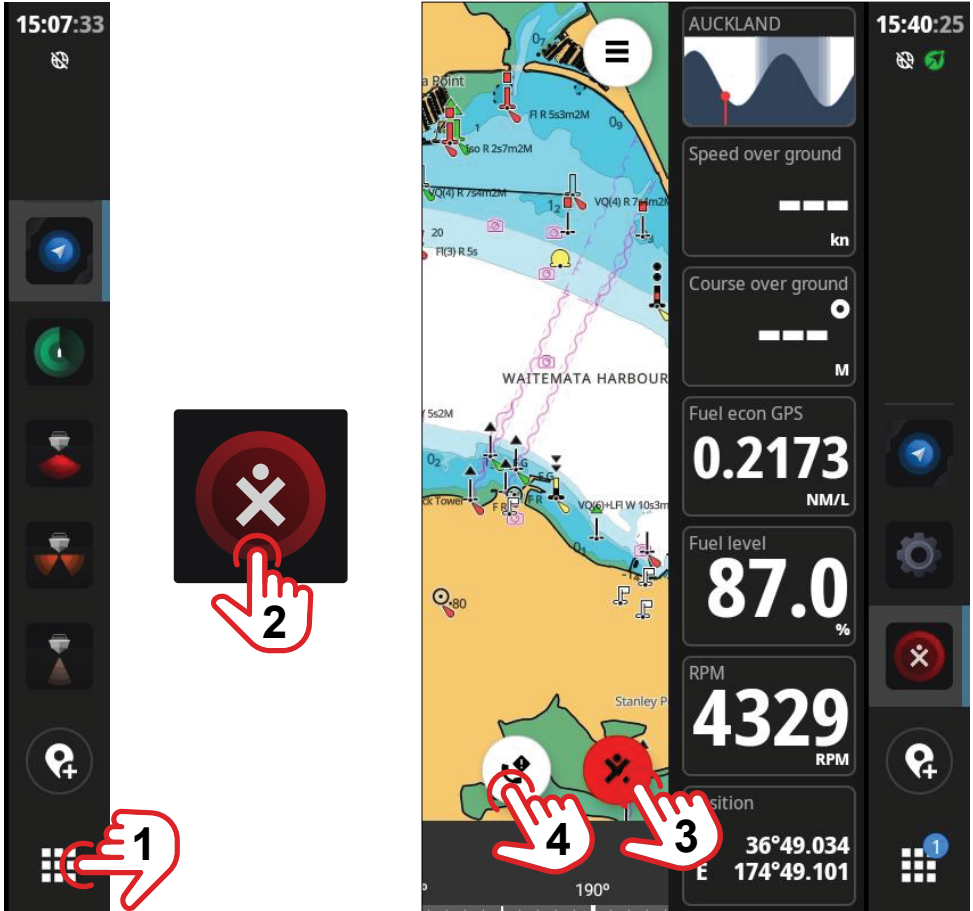
Emergency and MOB

Use the Man Overboard (MOB) app for emergency situations. To open the app, select MOB (2) on the home screen.

Select overboard marker (3) to create a MOB waypoint at your vessel's location. Now select the call assistance button (4) to view helpful prompts when seeking assistance.

Follow the instructions to respond to the emergency.

→ **Note:** Use the Waypoints & Routes app to remove your MOB waypoint.



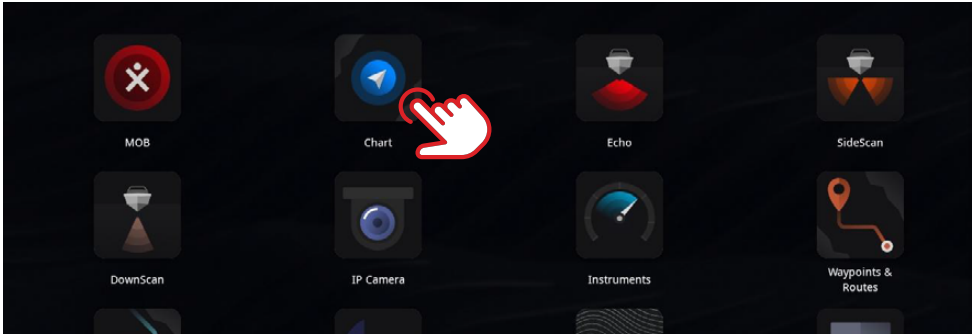
APPS

An app is a program for a unique feature or function. The availability of some apps depends on the size of your display unit and hardware connected to your system.

For app-specific user guides, download the Simrad® mobile app on your mobile device and connect it to your display unit, or visit: www.simrad-yachting.com.

Open apps

To open an app, select the app icon from your home screen. Alternatively, if the app is pinned or used recently, you can select it from the recent apps panel.

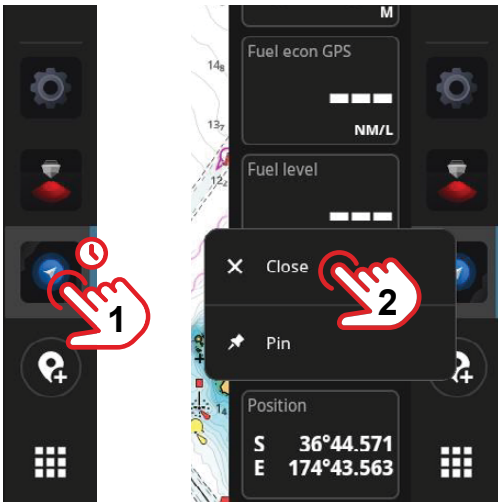


→ *Note: If an app is already open but not currently showing on your display, simply select it from your home screen or recent apps panel.*

Close apps

To close an app, select and hold it in the recent apps panel and select **Close**.

When you close an unpinned app, it disappears from the recent apps panel. If you close a pinned app, it continues to show in the recent apps panel.



Pin apps

You can pin the apps you use most often to your recent apps panel. Both individual apps or custom app groups can be pinned to the recent apps panel.

To pin an app, select and hold it on the recent apps panel and select **Pin**.

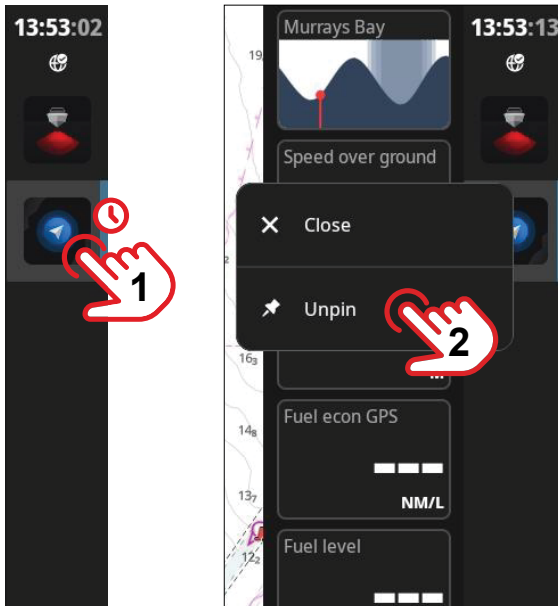
Select a plus button in the recent apps panel to specify where you want to position the app.

→ **Note:** The app you pin at the top of the recent apps panel opens by default each time you restart the unit.



Unpin apps

To unpin an app, select and hold it in the recent apps panel and select **Unpin**.

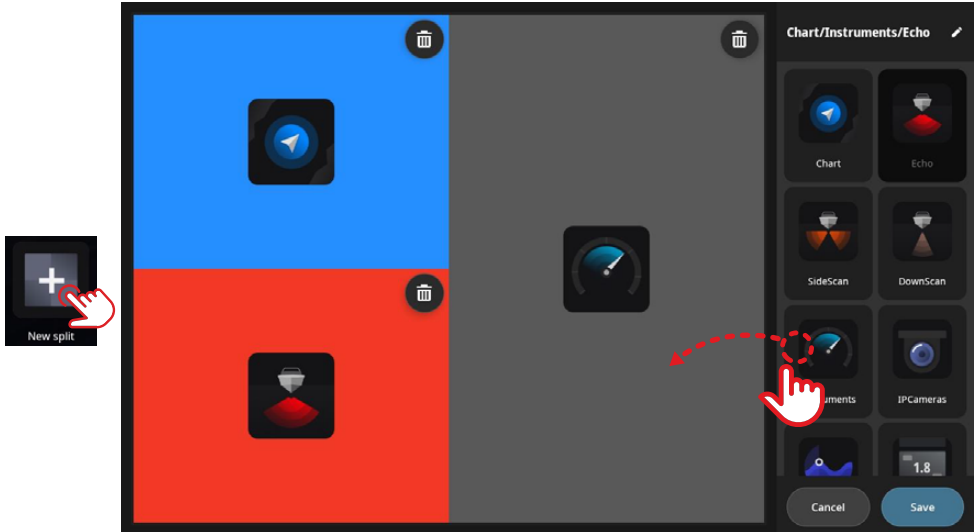


Custom app groups

When you group apps, you can view two or more apps at the same time.

You can view more than one instance of the same app, such as two instances of the Chart app with different zoom levels.

To create a new app group, select **New split** on the home screen. Drag and drop the desired apps onto your new app group and select the edit icon to give it a unique name before you select **Save**.



To edit or delete an app group, select and hold its icon on your home screen or recent apps panel and select **Edit** or **Delete**.

SIRIUSXM® WEATHER AND FISH MAPPING®

Your NSX display unit supports the Simrad® WM-4 marine satellite weather/audio receiver. (Part number SKU: 000-14970-001, sold separately).

When the WM-4 receiver is connected to your system and if you have the appropriate SiriusXM® subscription you can include SiriusXM® marine weather services, Fish Mapping® and SiriusXM® radio on your system.

Weather data appears as an overlay on the chart app. Refer to the **Chart App Guide** for details.

SiriusXM® weather service covers a variety of North American inland waters and coastal areas. For more information refer to www.siriusxm.com/marine.

→ *Note: SiriusXM® weather is available in North America only.*

DISCOVER X AND REVEAL X CHARTS

You can purchase and install high resolution Discover X and Reveal X chart data for your NSX display unit.

The charts can be purchased via the **C-MAP X-Chart Manager** as a digital license and stored on the unit's internal memory or via a microSD® card with pre-installed data.

Refer to the **X-Chart Manager App Guide** for details.



→ *Note: An internet connection is required to access and download chart data.*

→ *Note: We recommend you save chart data onto a microSD® card to free up space on the unit's internal memory. The internal memory is used to save your waypoints, routes, and tracks.*

CONTROLLERS

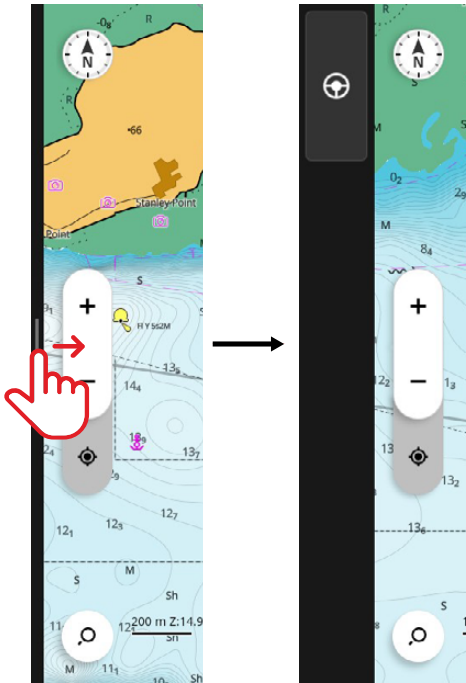
Controllers are vertical panels on your screen that allow you to remotely operate system devices, such as an autopilot or audio server. If these devices are installed, you can access their controllers from your unit's control bar. For detailed information about a controller, refer to its specific guide.

The following controllers are available:

- Audio
- Autopilot
- CZone® Digital switching
- Mercury® Engines (cruise and troll functions)

Show control bar

To show the control bar, swipe in from the left edge of the screen.



To hide the control bar, swipe out to the left of the screen.

→ Notes:

- Any active control bar app must be closed to hide the control bar.
- Hiding the control bar gives you more space to display your apps.

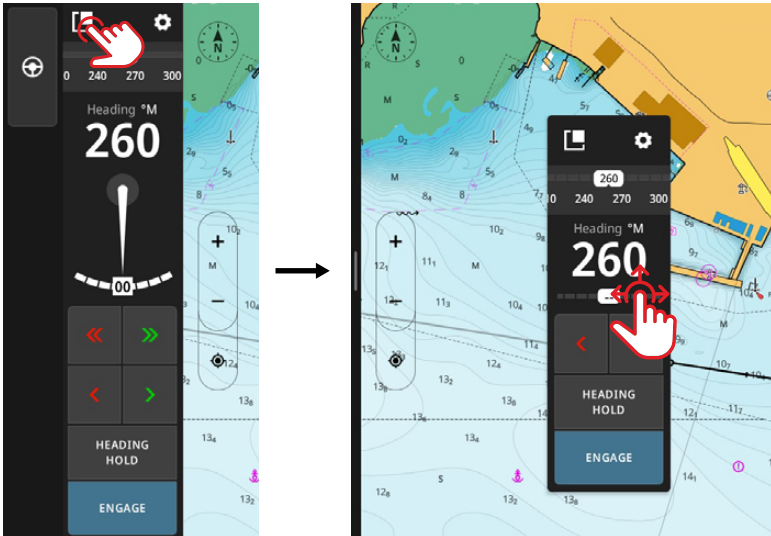
Open controller

To open a controller, select the controller button from the control bar. Re-select the controller button to close it.



Float a controller

To detach a controller from the control bar, select and drag the float icon to your desired location on the screen. Select the float icon again to re-attach the controller to the sidebar.

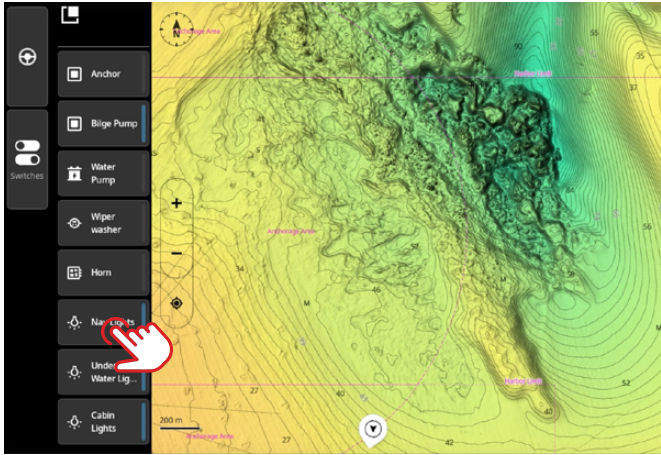


→ *Note: The floating controller feature is available on 9", 12", and Ultrawide display units.*

CZone® Digital switching controller

The control bar switches appear automatically when a CZone® device is commissioned on the NMEA 2000® network. Select a button to toggle on/off the device.

→ *Note: Refer to the CZone® switch documentation and configuration tool for guidance.*



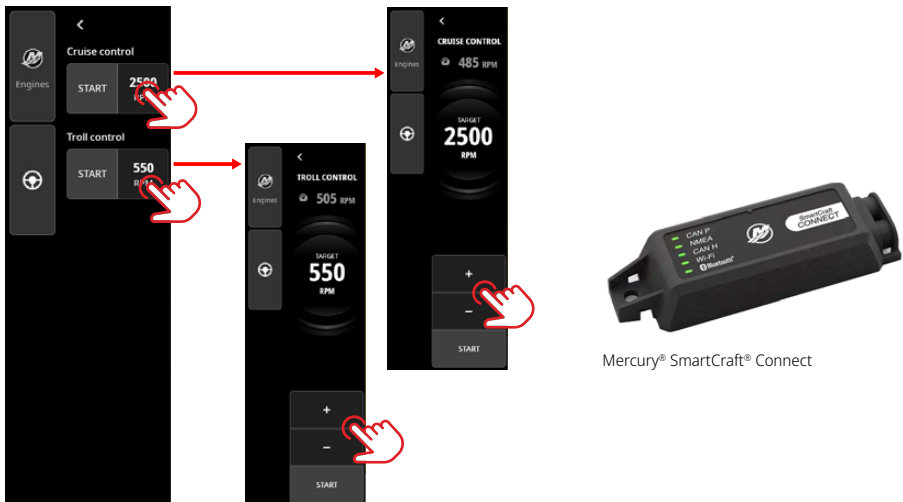
Mercury Engines controller

The Mercury Engines controller is available when a Mercury SmartCraft® Connect gateway is installed and commissioned on the vessel. Refer to the **Mercury App Guide** for operating instructions.

The following features are supported:

- Cruise control — provides precise control of the engine RPM or speed control
- Troll control — provides precise low-speed control in 10 RPM increments

→ *Note: Consult your Mercury SmartCraft® Connect installer or refer to the product documentation for further information.*



NETWORK SONAR SHARING

Echosounder data can be shared between multiple networked NSX display units. Refer to the respective sonar app guide for details.



→ **Note:**

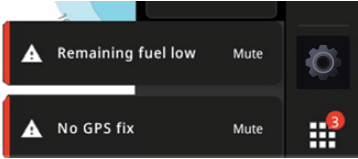
- *Multiple sonar splits are not permitted.*
- *Your NSX unit cannot setup or display NMEA 2000 digital depth and temperature data.*
- *StructureScan 3D, ActiveTarget, ForwardScan from SonarHub, and Active Imaging HD are not supported.*

ALERTS

The unit continuously monitors connected sensors and devices for alerts, system faults and environmental changes. Alerts can be configured by setting up rules.

When triggered, an alert rule generates one of the following message types:

- **Notification** — a message that stays on the screen for 15 seconds and then automatically disappears, or until you acknowledge it.
- **Warning** — a message that stays on the screen until you acknowledge it.
- **Alarm** — a message that stays on the screen until you acknowledge it. If your system's siren is on, it is also accompanied by an audible alarm.



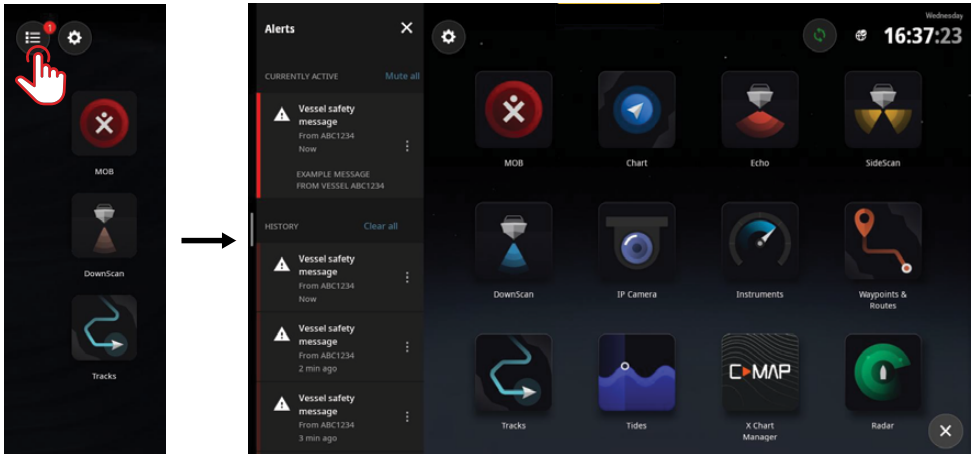
Acknowledge an alert

Select **Mute** or swipe the alert towards the right of the screen to dismiss an alarm alert. A badge continues to display on the home button until the alert is resolved.

View alert messages

To view a list of all your alert messages, select the alerts button on your home screen.

- The **CURRENTLY ACTIVE** section contains alarms and warnings with unresolved conditions (the conditions that triggered the alerts still exist).
- The **UNREAD** section contains notifications you did not acknowledge (they automatically disappeared after 15 seconds).
- The **HISTORY** section contains alarms and warnings with resolved conditions, and notifications you have acknowledged.



Select the  button to manage or remove an alert.

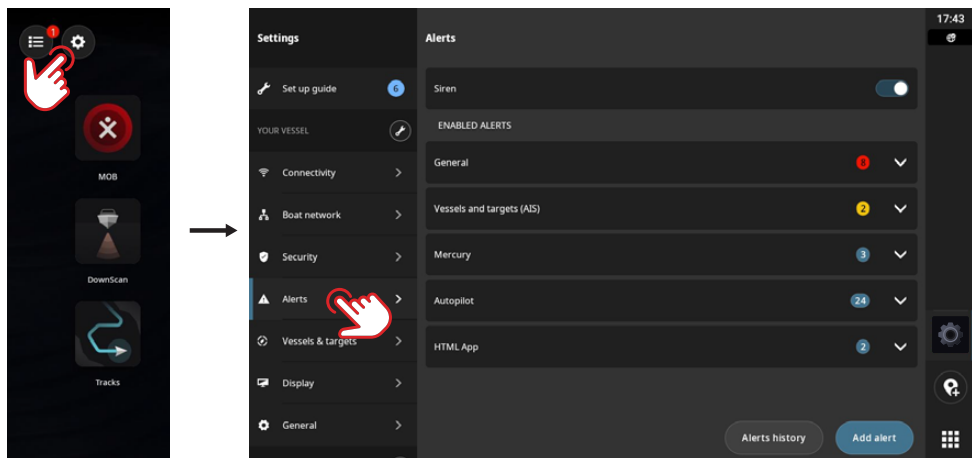
→ **Note:** The alerts list only displays alerts generated since the unit was last turned on.

Manage alert rules

You can edit and delete default alert rules, or create your own, through the **Settings** menu.

The **Alerts** panel allows you to apply one or more message types (notification, warning or alarm) to each alert and set the value that triggers it.

You can also delete your alerts history and turn on the unit's siren from this panel.



→ Notes:

- Turn on the siren for audible alarm alerts.
- When connected, external alarms will also be audible if an alarm alert is triggered.

STATUS ICONS

Status icons show on your home screen or at the top of your recent apps panel when an app is open.

| Icon | Description | |
|------|----------------------------|---|
| | Wi-Fi® signal strength | |
| | Wi-Fi® signal error | |
| | Wi-Fi® disconnected | |
| | Internet connected | |
| | Internet connection error | |
| | No internet | |
| | Connection to internet | |
| | Navigation indicator | Shows when actively navigating towards a waypoint or along a route. |
| | Mobile device disconnected | Shows only if the phone is expected to be connected |
| | Bluetooth® connected | Shows if a Bluetooth® device is connected |
| | Sound off | Shows if an audio device is connected and the sound is off |
| | Water mode | Shows if the screen is less responsive due to water on the display |
| | Screen locked | Shows if the screen has been locked via the quick access menu |
| | Check oil | Shows when connected to a suitable sensor / engine interface. |
| | Fuel low | |
| | Radar transmitting | |
| | Remote controller | The MFD is controlled by a remote controller |
| | Synchronizing | Synchronizing waypoints, routes and tracks |

USB PORT

A USB-A port is available on 9", 12", and 12"/15" Ultrawide display units. It can be used to:

- Connect a MI-10 microSD® card reader.
- Connect a USB storage device or a generic USB card reader.
- Store screenshots, sonar recordings and other system data.

→ **Note:** *USB storage devices should be standard, PC-compatible hardware in FAT32, ExFAT or NTFS file system.*

CARD READER

A microSD® card can be used to:

- Store detailed charts (Discover X and Reveal X)
- Store or transfer user data (waypoints, routes, tracks, screenshots)
- Update software

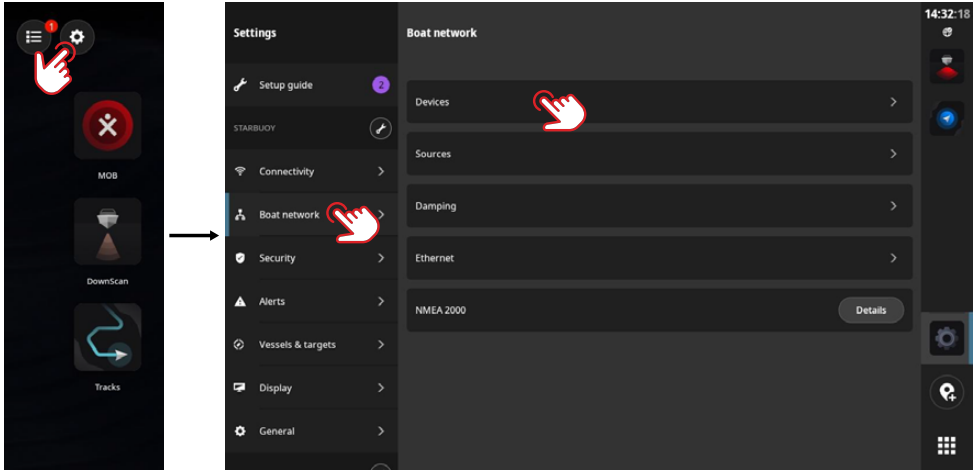
→ **Notes:**

- *If a microSD® card and USB storage device are both inserted, by default, data and screenshots are saved to the USB storage device.*
- *Do not download, transfer or copy files to a chart card as it can damage chart information on the card.*
- *MicroSD® cards up to a maximum of 256 GB capacity are supported in FAT32, ExFAT or NTFS file system.*
- *Always shut the protective cover securely after inserting or removing a microSD® card to keep the slot watertight.*

CONNECTED DEVICES

Configure connected devices

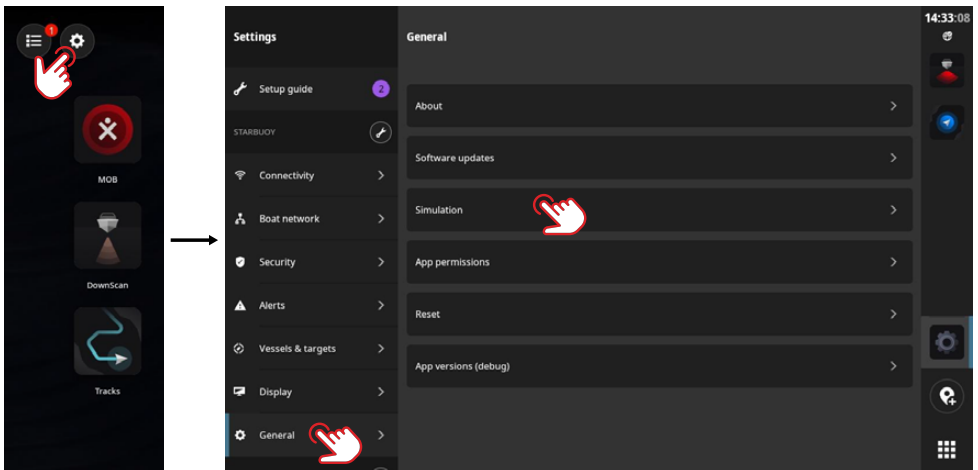
You can configure connected equipment from the devices list. Select the settings button from the home screen, then **Boat network** > **Devices** to open the devices list.



→ *Note: The configuration options available depend on the connected devices.*

Simulation

The simulation feature lets you see how the unit works without being connected to sensors or other devices. Select the settings button from the home screen, then **General** > **Simulation**.



SYSTEM SOFTWARE

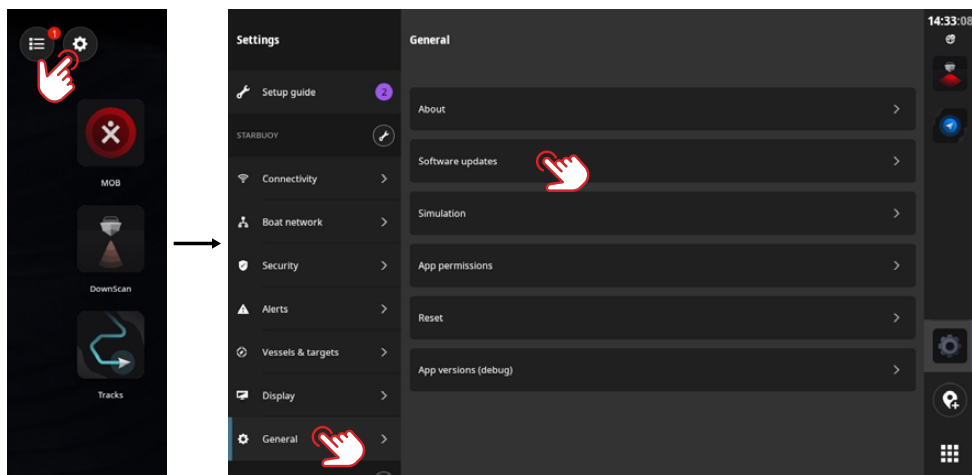
Update software

Your unit will automatically check for software updates for itself and connected devices when it's connected to the internet.

We recommend you register your device and install the Simrad® mobile app onto your mobile device. You can update the unit's software using the mobile app too.

Alternatively, you can download software updates from the Simrad® website onto a USB storage device or microSD® card and manually update the software.

When you insert a microSD® card (or USB storage device for 9", 12", 12" Ultrawide, and 15" Ultrawide models) with a newer software version, the unit automatically moves it to the right location and prompts for your permission to update.



Backup data

Waypoints, routes, and tracks data can be saved onto a microSD® card or USB storage device as a backup or to transfer data onto another unit. Refer to the **Waypoints & Routes** or **Tracks** app guide for instructions on data export.

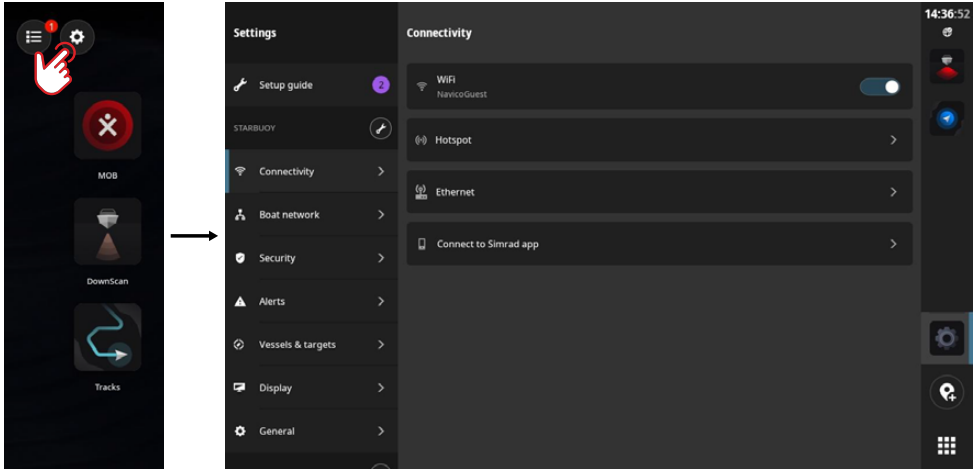
Supported file format

Backup data is created in the .USR, .GPX, and NEON file formats. These files contain information such as waypoints, routes, tracks, and are used for backups or to transfer data between devices.

This unit supports the export and import of v6 .USR files.

SYSTEM SETTINGS

On the **Settings** screen, you can manage system settings and settings for connected devices.



Your vessel (the vessel's name)

Use to adjust vessel-specific settings. Most of the settings for your vessel were configured the first time the device was started.

→ **Note:** *The unit shows 'Your vessel' by default but changes as soon as you give your vessel a name in the devices list.*

Connectivity

Use to connect the unit to a Wi-Fi® network, create a hotspot, manage Ethernet connection settings, or connect to the Simrad® mobile app.

→ **Note:** *Some marinas may require you to accept their terms of use to access Wi-Fi® internet connections. This connection method is not supported by the unit. We recommend you install the Simrad® mobile app on your mobile device to download and install updates to your unit.*

Hotspot

This display unit can simultaneously connect to the internet and be a hotspot for Wi-Fi® connections; for example, to connect another mobile device to the unit.

→ **Note:** *Turn on the display unit's hotspot to connect directly to the Simrad® mobile app on your mobile device.*

Boat network

Use to manage connected devices.

Devices

Lists all internal and external devices and modules. You can access setup options, configuration options and view details from the list.

Sources

Lists selected sources for various functions. You can manually select sources or let the system perform an automatic source selection for you.

Damping

If data appears erratic or too sensitive, apply damping to stabilize the data.

→ *Note: Damping values are only applied to data shown on the display unit where you set the damping.*

Security

Set a 4-digit PIN to prevent unauthorized access to your unit. You will need to set up a Simrad® account to set up a PIN.

You will be asked to enter your PIN when you turn on the unit or when you want to use the unit again after placing it on standby.

→ *Note: If you forget your display unit's PIN, use your Simrad® account login details to unlock it. An internet connection is required.*

Alerts

Use to add, edit and delete alerts. For more information, refer to the **Alerts** section of this guide.

Vessels & targets

Use to manage AIS and radar target settings.

Display

Use to manage additional display settings.

General

Provides information about your display unit, system updates, device reset, and more.

Simrad® account

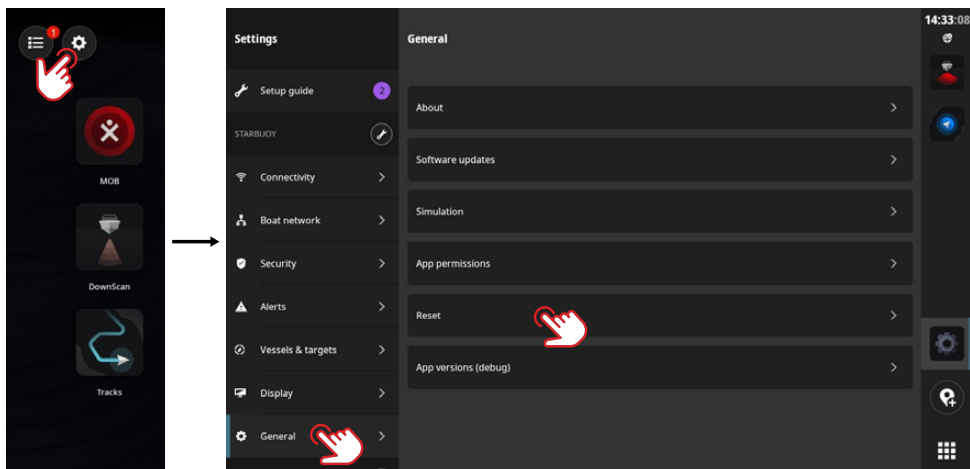
Use to manage your Simrad® account, backups and more.

Preferences

Use to manage language and country, date and time, navigation, and units of measure preferences.

Restore factory settings

Use the **Reset** option to restore your display unit to the factory default settings.



→ *Note: All personalized settings and content are deleted, including waypoints, routes and tracks.*

